

### CEVI VARJENE PO :

- VF (EN 10296-2) D2 T3

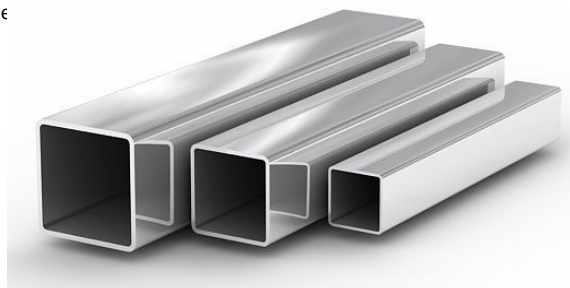
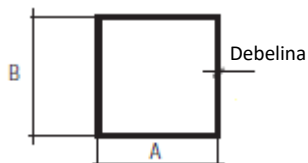
Po naročilu lahko dobavimo določene dimenzije brušenih, poliranih cevi.

Standardna površina cevi: Toplovaljana

Dolžina cevi: Cca. 6 m

Toleranca: ISO 1127

Certifikat: EN 10204/3.1



### WELDED TUBES PROCEDURE

- HF (EN 10296-2) D2 T3

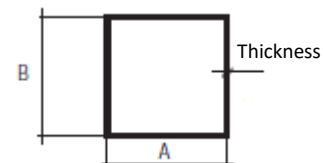
On request we can supply some dimensions of polished and mirror polished pipes.

Tube length: Cca. 6 m

Standard surface of tubes: Hot rolled

Tolerances: ISO 1127

Certificate: EN 10204/3.1



### DIMENZIJE

### DEBELINA V MM - THICKNESS IN MM

Dimensions		1	1,2	1,5	2	2,5	3	4	5	6
A MM	B MM	Kg/m								
10	10	0,300								
12	12	0,358	1,500	0,423						
15	15	0,453	0,538	0,661						
20	20	0,613	0,729	0,901	1,176					
25	25	0,772	0,921	1,140	1,495	1,837	2,167			
30	30	0,932	1,112	1,379	1,814	2,236	2,645			
35	35	1,091	1,304	1,618	2,133	2,635	3,124			
40	40	1,251	1,495	1,858	2,452	3,033	3,602	4,700		
45	45	1,410	1,686	2,097	2,771	3,432	4,081	5,340		
50	50		1,878	2,336	3,090	3,831	4,559	5,980		
60	60			2,814	3,728	4,628	5,516	7,255		
70	70			3,771	4,370	5,430	6,470	8,530	8,943	10,582
80	80			4,728	5,004	6,223	7,430	9,807	12,133	14,410
100	100				6,279	7,818	9,344	12,359	15,323	18,237
120	120				7,555	9,413	11,258	14,910	18,513	22,065
150	150				9,469	11,799	14,129	18,738	23,297	27,806
200	200				12,660	15,790	18,910	25,120	31,270	37,380
250	250						23,690	31,490	39,240	46,940

## CEVI VARJENE PO :

- VF (EN 10296-2) D2 T3

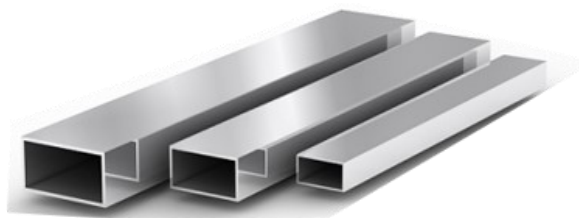
Po naročilu lahko dobavimo določene dimenzije brušenih, poliranih cevi.

Standardna površina cevi: Toplovaljana

Dolžina cevi: Cca. 6 m

Toleranca: ISO 1127

Certifikat: EN 10204/3.1



## WELDED TUBES PROCEDURE

- HF (EN 10296-2) D2 T3

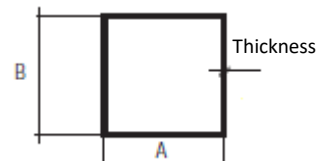
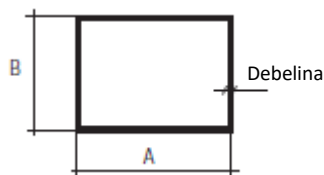
On request we can supply some dimensions of polished and mirror polished pipes.

Tube length: Cca. 6 m

Standard surface of tubes: Hot rolled

Tolerances: ISO 1127

Certificate: EN 10204/3.1



## DIMENZIJE

## DEBELINA V MM - THICKNESS IN MM

Dimensions		1	1,2	1,5	2	2,5	3	4	5	6
A MM	B MM	Kg/m								
20	10	0,453	0,538	0,661						
20	15	0,53	0,63	0,78						
25	10	0,533	0,634	0,781						
25	15	0,613	0,729	0,901	1,176					
30	10	0,613	0,729	0,901	1,176					
30	15	0,693	0,825	1,02	1,335					
30	20	0,772	0,921	1,14	1,495	1,837	2,167			
35	20	0,852	1,017	1,259	1,654	2,036	2,406			
40	15	0,852	1,017	1,259	1,654	2,036	2,406			
40	20	0,932	1,112	1,379	1,814	2,236	2,645			
40	30	1,091	1,304	1,618	2,133	2,635	3,124			
50	20	1,091	1,304	1,618	2,133	2,635	3,124			
50	25	1,171	1,399	1,738	2,292	2,834	3,363			
50	30	1,251	1,495	1,858	2,452	3,033	3,602			
50	40	1,41	1,686	2,097	2,771	3,432	4,081			
60	20	1,251	1,495	1,858	2,452	3,033	3,602			
60	30	1,41	1,686	2,097	2,771	3,432	4,08			
60	40		1,878	2,336	3,09	3,831	4,56	5,979	7,349	
80	40			2,814	3,728	4,628	5,516	7,255	8,943	10,582
80	60			3,293	4,366	5,426	6,473	8,531	10,538	12,496
100	40			3,293	4,366	5,426	6,473	8,531	10,538	12,496
100	50			3,532	4,685	5,824	6,952	9,169	11,336	13,453
100	60			3,771	5,004	6,223	7,43	9,807	12,133	14,41
100	80			4,25	5,641	7,021	8,387	11,083	13,728	16,324
120	40			3,771	5,004	6,223	7,43	9,807	12,133	14,41
120	60			4,25	5,641	7,021	8,387	11,083	13,728	16,324
120	80			4,728	6,279	7,818	9,344	12,359	15,323	18,237
150	50				6,279	7,818	9,343	12,358	15,322	18,236
150	100				7,875	9,806	11,737	15,549	19,31	23,41
200	100				9,469	11,799	14,129	18,738	23,297	27,806
200	150						16,52	21,92	27,28	32,59
300	100						18,91	25,11	31,27	27,37
300	200						23,69	31,49	39,24	46,94